



GLASSHAMMER RTT

RULESPACK



BASIC INFORMATION

A 40K SINGLES EVENT FOUGHT OVER 3 GAMES AT 'THE GLASSHOUSE' IN TELFORD.

**THE GLASSHOUSE
REDLAND INDUSTRIAL ESTATE
ST. GEORGES, TELFORD
TF2 9JX**

YOU CAN FIND MORE INFORMATION ABOUT OUR EVENTS ON OUR EVENTS PAGE

[HTTPS://WWW.GLASSHAMNERGAMING.CO.UK/GHGEVENTS](https://www.glasshamnergaming.co.uk/ghgevents)

ENTRY TO THE EVENT IS £25 AND INCLUDES:

- **3 X 3 HOUR GAMES OF 40K FUN**
- **AWESOME TROPHIES AND MINI'S UP FOR GRABS**
- **OUR AWESOME CUSTOM TABLES AND TERRAIN TO PLAY YOUR GAMES**
- **FREE PARKING**

REGISTERING FOR THE EVENT

ONCE YOU'VE PURCHASED A TICKET YOU'LL NEED TO REGISTER FOR THE TOURNAMENT USING THE LINK BELOW:

[HTTPS://WWW.GLASSHAMNERGAMING.CO.UK/EVENT-REGISTRATION](https://www.glasshamnergaming.co.uk/event-registration)

ONCE COMPLETED, PROVIDED ALL YOUR INFORMATION IS CORRECT, YOU'LL BE ADDED TO BCP WITHIN 3 DAYS OF SUBMISSION.

PLAYERS NEED TO BRING:

- **THEIR 2000PT, BATTLE FORGED ARMY (ALL WYSIWYG)**
- **ANY TEMPLATES, DICE, COUNTERS OR MARKERS NEEDED**
- **A COPY OF ALL RULES AND DATASHEETS THEY REQUIRE FOR THEIR ARMY**

REFUNDS ARE AVAILABLE UP TO 7 DAYS BEFORE THE EVENT

EVENT TIMINGS

REGISTRATION	9:00 - 9:30	BREAK	16:30 - 16:45
GAME 1	9:30 - 12:30	GAME 3	16:45 - 19:45
LUNCH	12:30 - 13:30	AWARDS	19:45 - 20:00
GAME 2	13:30 - 16:30		

THE FIRST ROUND DRAW WILL BE RANDOMLY GENERATED WITH FOLLOWING ROUNDS BEING DETERMINED BY A RANDOM DRAW WITHIN A WIN BRACKET.

**WE WILL BE USING THE WTC FAQ WHICH CAN BE FOUND HERE:
[HTTPS://WORLDTEAMCHAMPIONSHIP.COM/WTC-RULES/](https://worldteamchampionship.com/wtc-rules/)**

FOLLOW THE 'MUSTER YOUR ARMY' STEPS FROM THE WARHAMMER 40,000 CORE RULES USING RULES FOR STRIKE FORCE MISSIONS TO CREATE YOUR LIST.

ALL LISTS SHOULD BE SUBMITTED USING THE FORMAT IN THE WARHAMMER APP.

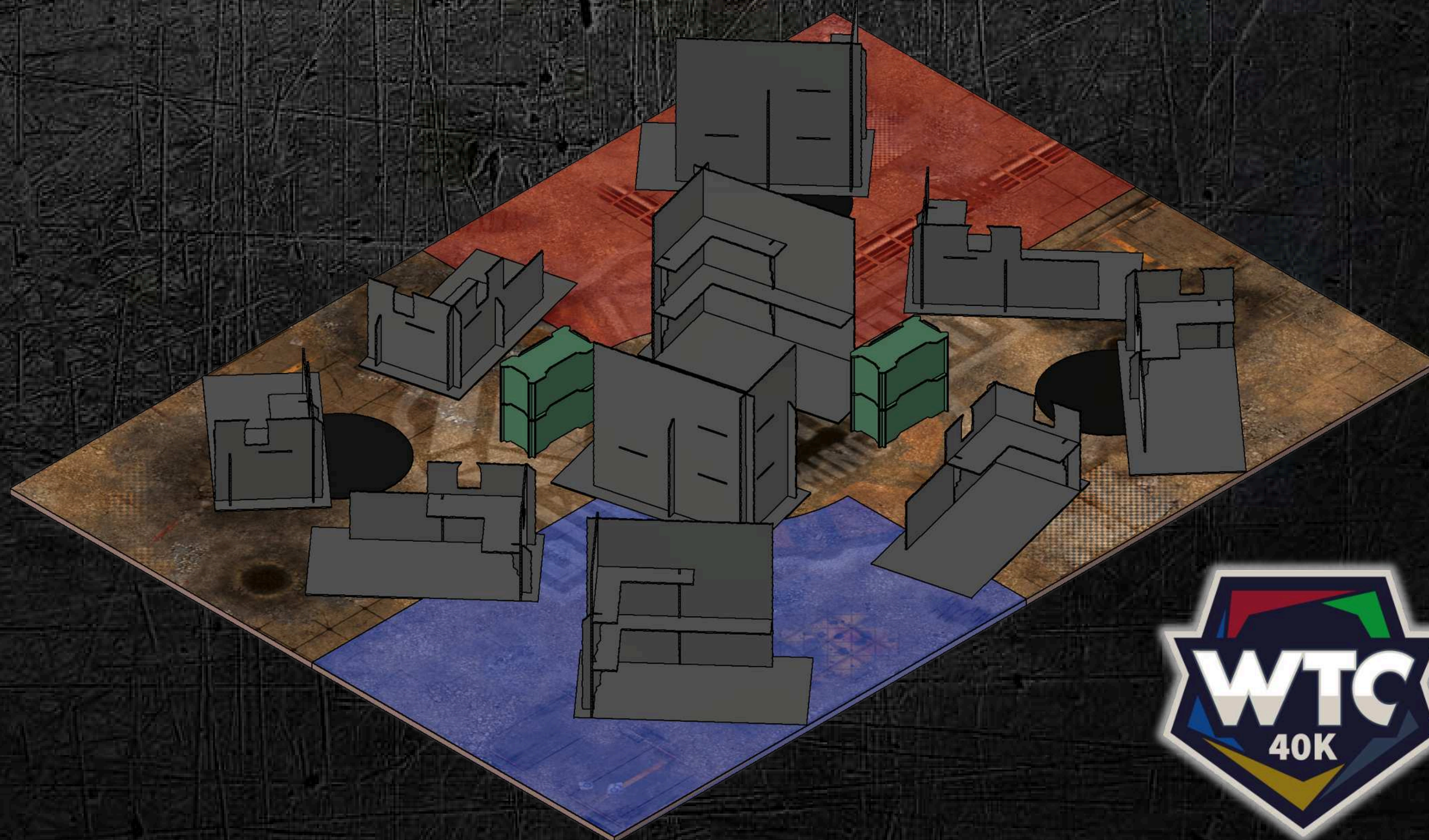
GLASSHAMMER EVENTS HAVE A REPUTATION OF BEING FUN, FRIENDLY AND WELCOMING FOR ALL WHO ATTEND AND THIS REPUTATION IS ONE WE INTEND TO UPHOLD. THEREFORE ANYONE CAUGHT CHEATING WILL BE ASKED TO LEAVE AND ANYONE BEING UNSPORTING WILL RECEIVE A YELLOW CARD.

TERRAIN LAYOUTS

ALL TABLES WILL HAVE A SET OF GLASSHAMMER WTC TERRAIN READY FOR YOU AND YOUR OPPONENT TO ARRANGE FOR YOUR GAME.

LAYOUTS CAN BE FOUND ON THE GLASSHAMMER GAMING EVENTS PAGE UNDER THE 'USEFUL LINKS' SECTION.

LINK COMING SOON...



MISSIONS

1	TERRAFORM	CRUCIBLE OF BATTLE (3)
2	SCORCHED EARTH	SEARCH & DESTROY (6)
3	PURGE THE FOE	HAMMER AND ANVIL (4)

SCORING YOUR GAME

EACH PLAYER SCORES AN AMOUNT OF POINTS BASED ON THE VP DIFFERENTIAL FROM THEIR GAME. TO DETERMINE GAME POINTS, EACH PLAYER COUNTS THEIR VICTORY POINTS, SUBTRACTS THEIR OPPONENT'S VICTORY POINTS AND CONSULTS THE TABLE BELOW. IF THE SCORE IS NEGATIVE, THE PLAYER WHO HAS A NEGATIVE DIFFERENCE COUNTS THEIR POINTS FROM THE 'OPPONENT' TABLE.

VP DIFFERENCE	PLAYER GAME POINTS	OPPONENT GAME POINTS
0 - 5	10	10
6 - 10	11	9
11 - 15	12	8
16 - 20	13	7
21 - 25	14	6
26 - 30	15	5
31 - 35	16	4
36 - 40	17	3
41 - 45	18	2
46 - 50	19	1
51+	20	0

PLAYING BY INTENT

WARHAMMER 40K IS GENERALLY PLAYED USING INTENT. THIS IS CONSIDERED TO BE THE STANDARD AT GLASSHAMMER UNLESS A PLAYER DECLARES THEY WOULD PREFER TO PLAY THE GAME STRICTLY ADHERING TO EXACT MEASUREMENTS AND TIMINGS (E.G THE EXACT MOMENT A STRATAGEM IS TO BE USED). IF A PLAYER DOES NOT CONFIRM THIS IS HOW THEY WOULD LIKE TO PLAY ALL JUDGE RULINGS WILL BE MADE WITH INTENT IN MIND.

YELLOW CARDS

WHEN A PLAYER IS GIVEN A YELLOW CARD THEY WILL RECEIVE A 0 POINT SCORE IN THEIR CURRENT GAME. A PLAYER GIVEN 2 YELLOW CARDS WILL BE REMOVED FROM THE EVENT.

PAINT SCORE

THERE IS NO MINIMUM PAINTING REQUIREMENT FOR THIS EVENT, AND SO EVERY PLAYER WILL AUTOMATICALLY BE GIVEN THE 10 POINTS FOR HAVING A BATTLE READY ARMY FOR EACH ROUND.

WYSIWYG

ALTHOUGH IT IS AWESOME TO SEE PEOPLE CONVERTING THEIR OWN MODELS, A CERTAIN AMOUNT OF 'WHAT YOU SEE IS WHAT YOU GET' SHOULD BE PRESENT. COUNTS AS MODELS SHOULD STILL BE THE SAME SIZE, FOOTPRINT AND HAVE THE SAME WEAPON LOAD OUT AS THEIR GW EQUIVALENT.

IF YOU WOULD LIKE TO CHECK WHETHER ONE OF YOUR CONVERTED MODELS WOULD BE ACCEPTED YOU MAY SEND AN EXPLANATION AND PICTURES TO: ELITE@GLASSHAMMERSGAMING.CO.UK

LIST SUBMISSION

LISTS MUST BE SUBMITTED BY MIDNIGHT THE NIGHT BEFORE THE EVENT. ANY LISTS NOT SUBMITTED ON TIME OR INCORRECT WILL INCUR PENALTY POINTS FOR THE PLAYER.

CHESS CLOCKS

IF ANY PLAYER WANTS TO USE A CLOCK THEN IT **MUST BE USED. IF YOU DO NOT USE A CHESS CLOCK THEN COMPLAINTS ABOUT SLOW PLAY CANNOT BE DEALT WITH.**

MISSING A BATTLE

IF YOUR OPPONENT HAS NOT ARRIVED 15 MINUTES INTO THE ROUND, REPORT TO THE REF HQ AND WE WILL RE-PAIR YOU.

CATERING

LUNCH WILL **NOT** BE PROVIDED HOWEVER THERE ARE PLENTY OF SHOPS AND TAKEAWAYS WITHIN WALKING DISTANCE OF THE VENUE.

PLEASE NOTE GUESTS CANNOT BRING THEIR OWN DRINKS TO CONSUME IN THE MAIN HALL UNLESS IT IS WATER. WE HAVE A FULLY STOCKED AND LICENSED BAR ON SITE.

PICTURES & STREAMING

PICTURES/VIDEOS WILL BE TAKEN AT THE EVENT AND PUBLISHED ON ALL OUR SOCIAL MEDIA PLATFORMS. BY PURCHASING A TICKET YOU ARE CONFIRMING THAT YOU CONSENT TO THIS AND ALL OTHER RULES IN THIS PACK.

EVERYONE IS WELCOME AT OUR TOURNAMENTS. WHETHER YOU ARE A 40K NEWBIE OR A SEASONED VETERAN, WE'RE HERE TO ENSURE EVERYONE HAS A FUN WEEKEND.

WE LOOK FORWARD TO SEEING YOU

LOVE

DAN & MANI

