



WWW.GLASSHAMMERGAMING.CO.UK



@GLASSHAMMERGAMINGUK



@GLASSHAMMERUK

MISSIONS

1	TERRAFORM	CRUCIBLE OF BATTLE (3)
2	SCORCHED EARTH	SEARCH & DESTROY (6)
3	LINCHPIN	CRUCIBLE OF BATTLE (5)
4	PURGE THE FOE	HAMMER & ANVIL (4)
5	TAKE AND HOLD	TIPPING POINT (4)
6	SUPPLY DROP	TIPPING POINT (3)

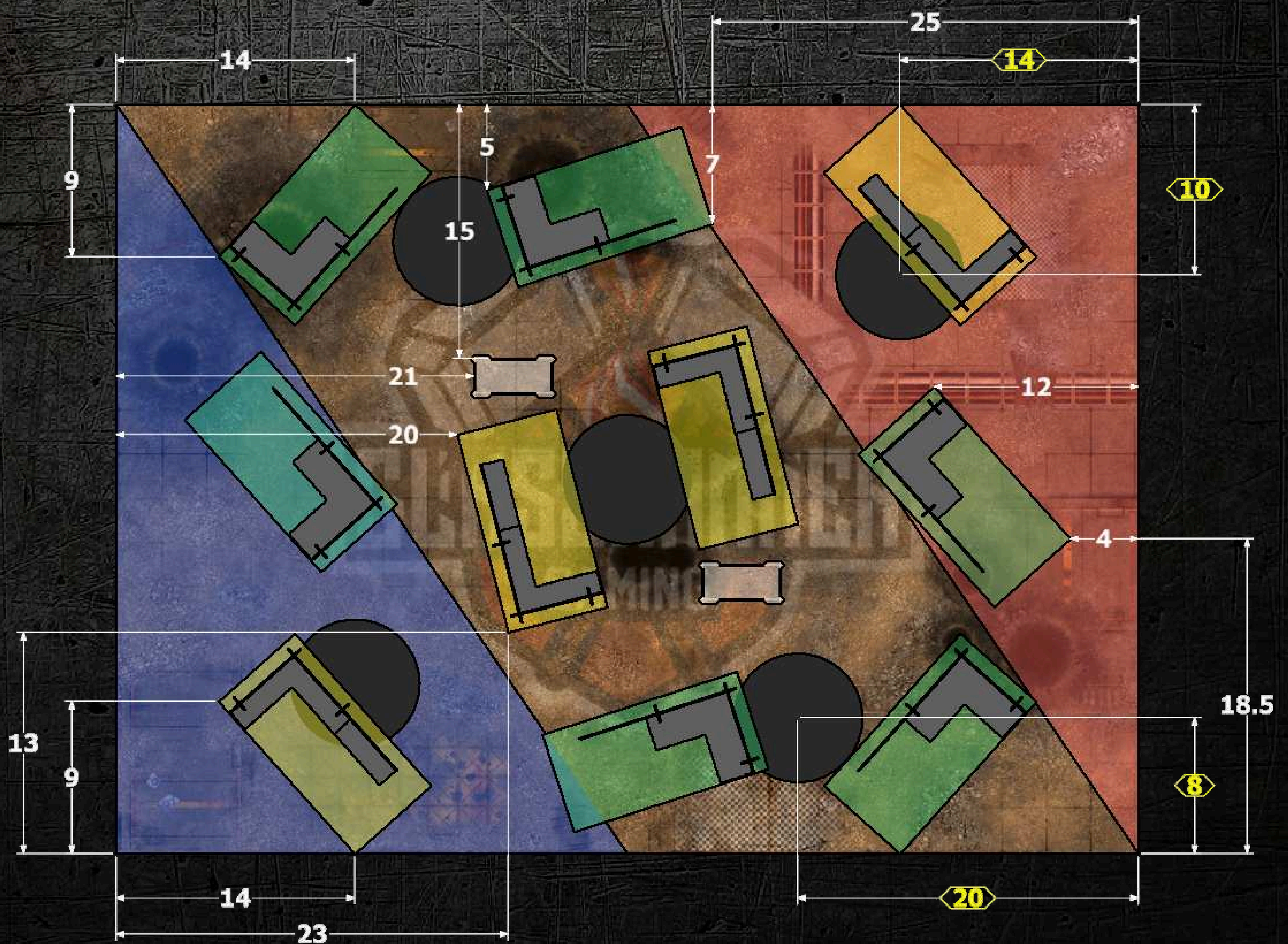
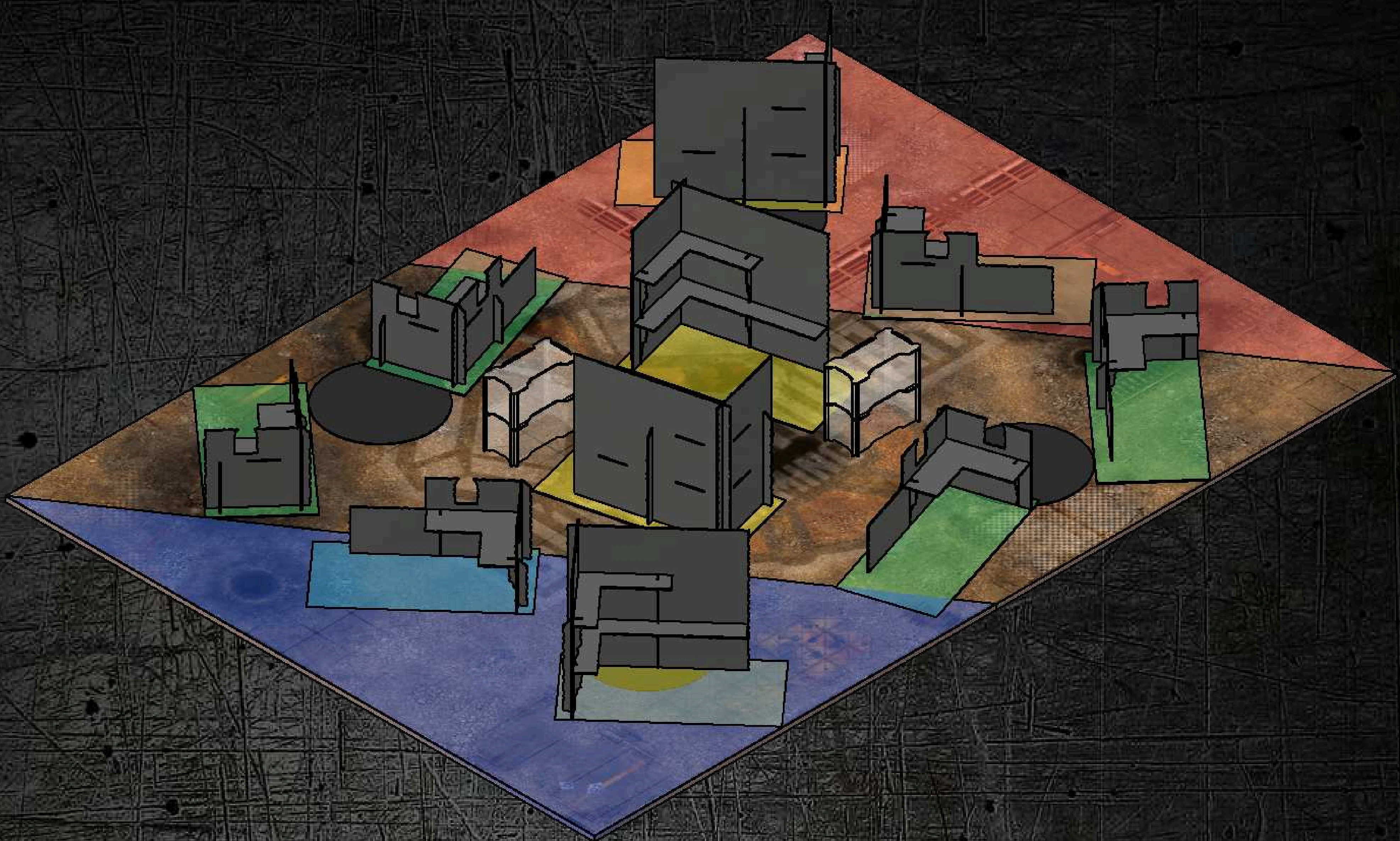
SCORING YOUR GAME

EACH PLAYER SCORES AN AMOUNT OF POINTS BASED ON THE VP DIFFERENTIAL FROM THEIR GAME. TO DETERMINE GAME POINTS, EACH PLAYER COUNTS THEIR VICTORY POINTS, SUBTRACTS THEIR OPPONENT'S VICTORY POINTS AND CONSULTS THE TABLE BELOW. IF THE SCORE IS NEGATIVE, THE PLAYER WHO HAS A NEGATIVE DIFFERENCE COUNTS THEIR POINTS FROM THE 'OPPONENT' TABLE.

VP DIFFERENCE	PLAYER GAME POINTS	OPPONENT GAME POINTS
0 - 5	10	10
6 - 10	11	9
11 - 15	12	8
16 - 20	13	7
21 - 25	14	6
26 - 30	15	5
31 - 35	16	4
36 - 40	17	3
41 - 45	18	2
45 - 50	19	1
51+	20	0

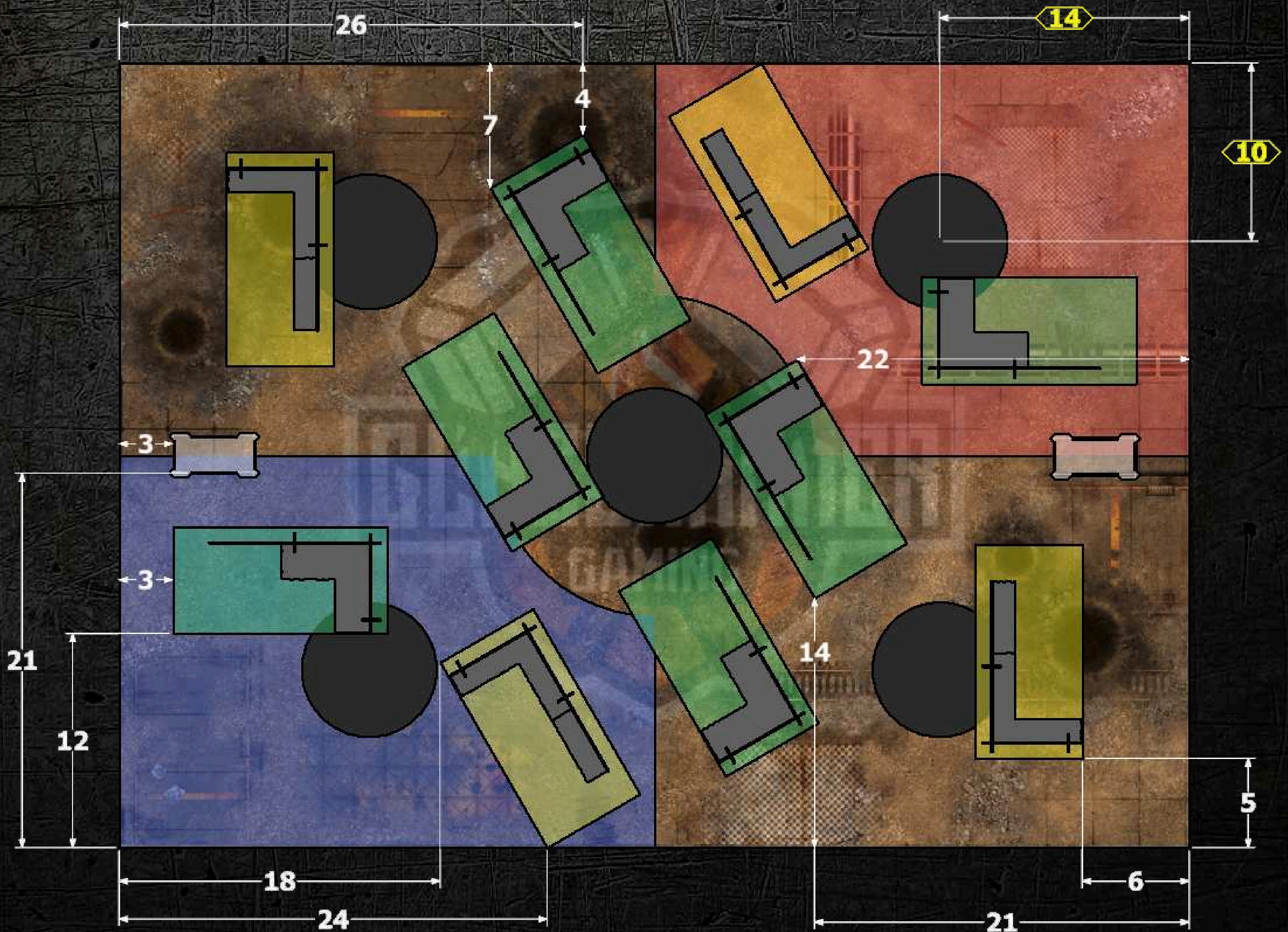
ROUND 1

TERRAFORM - CRUCIBLE OF BATTLE (3)



ROUND 2

SCORCHED EARTH - SEARCH & DESTROY (6)



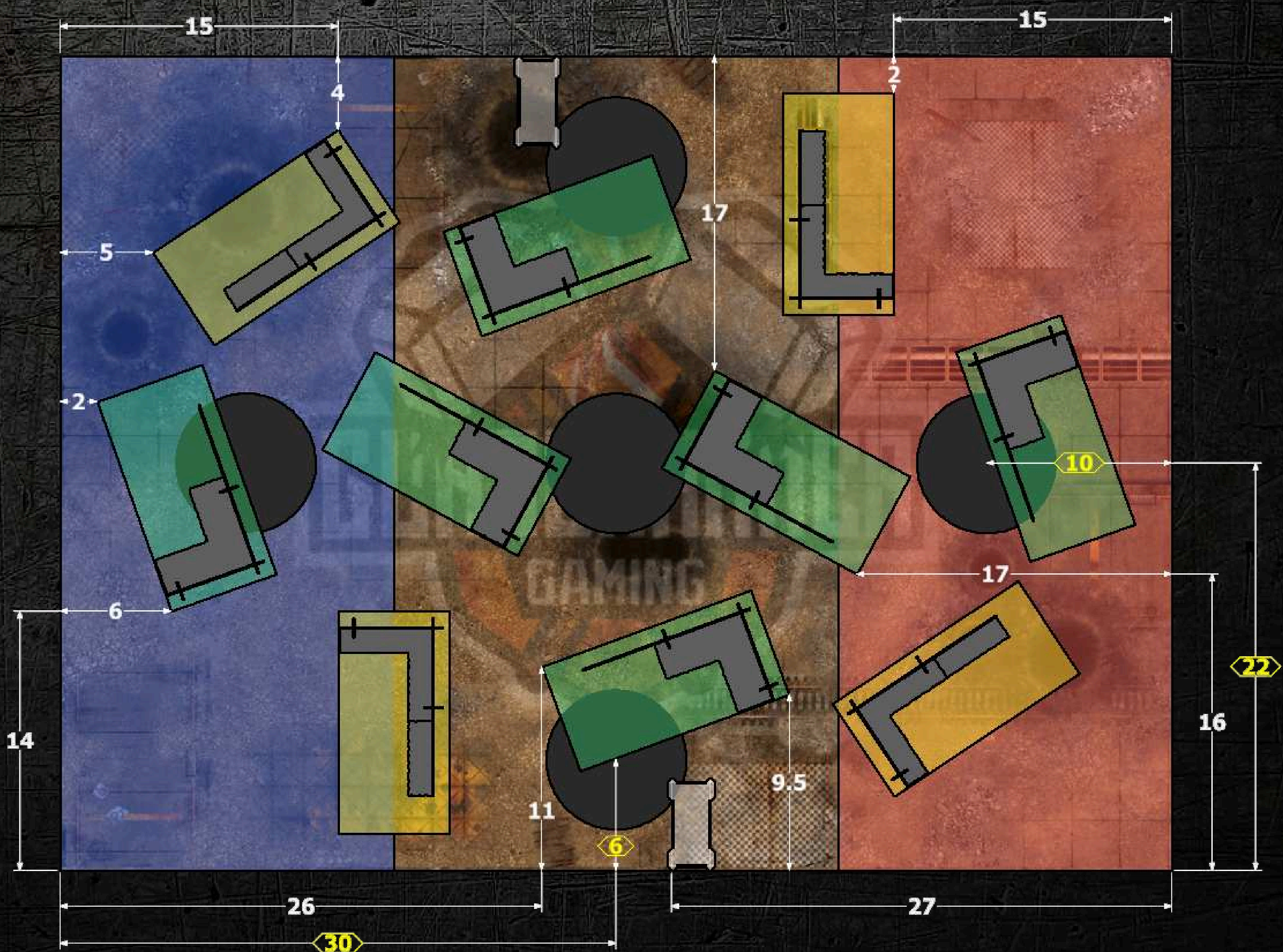
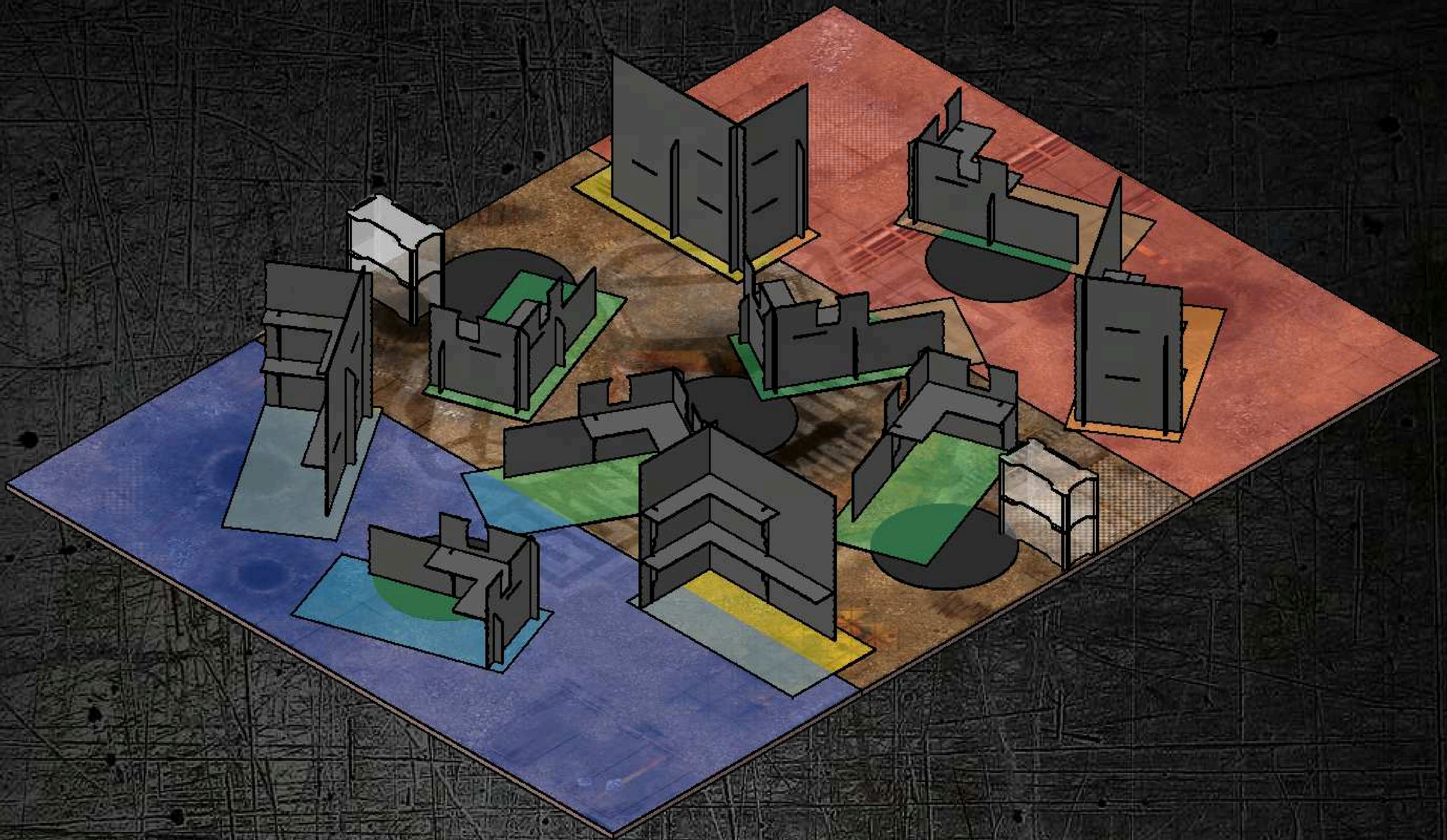
ROUND 3

LINCHPIN - CRUCIBLE OF BATTLE (5)



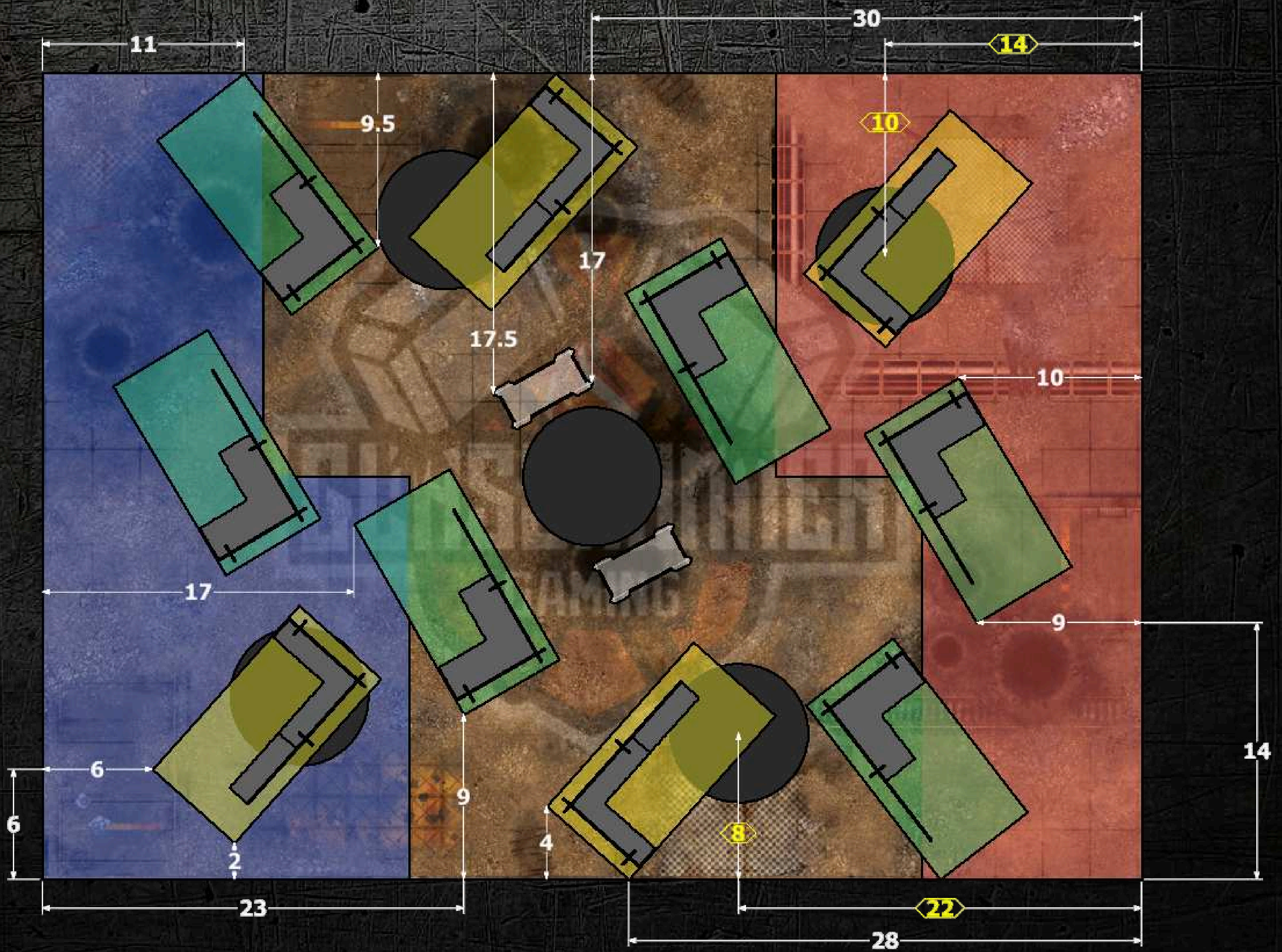
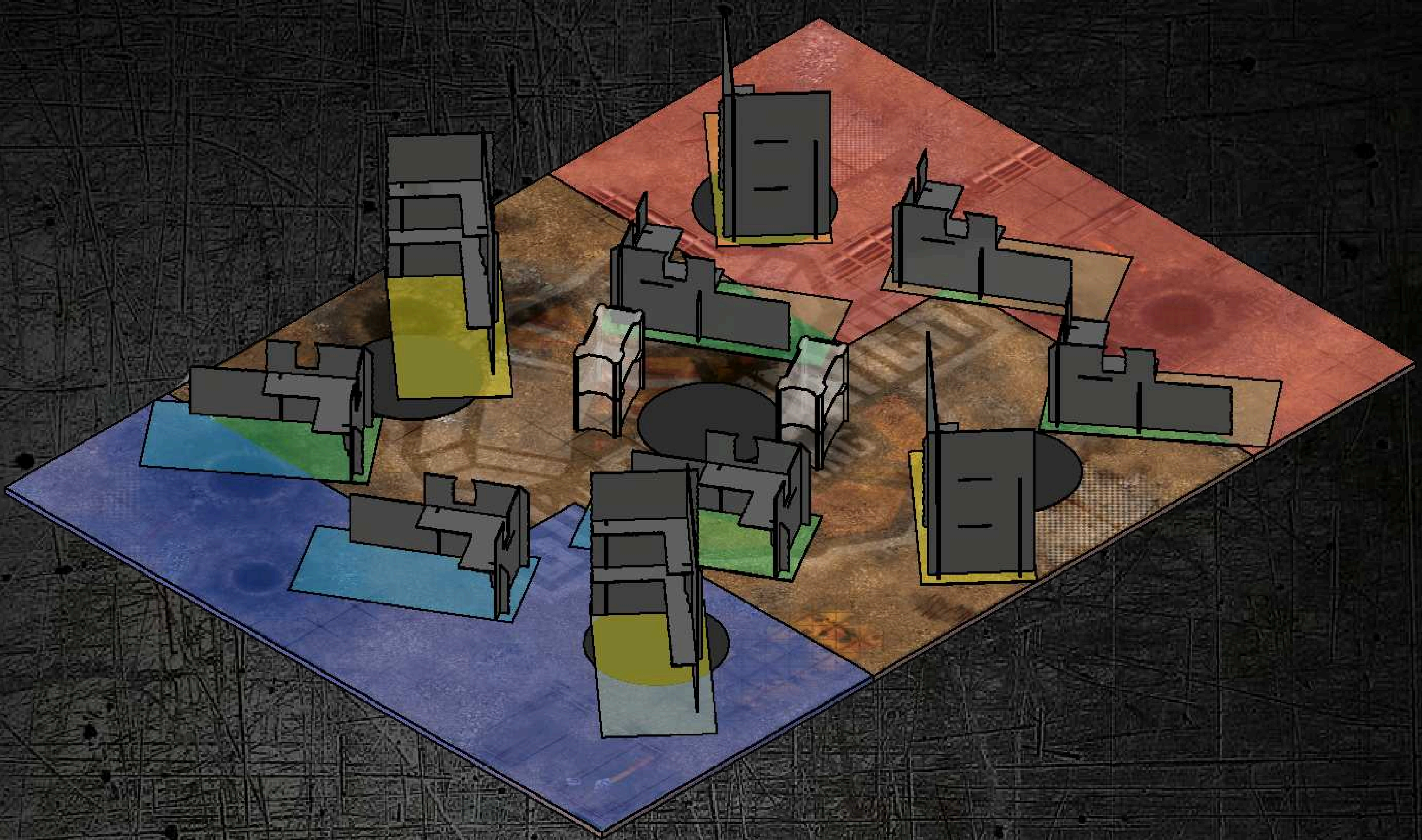
ROUND 4

PURGE THE FOE - HAMMER & ANVIL (4)



ROUND 6

SUPPLY DROP - TIPPING POINT (3)



EVENT TIMINGS

DAY 1

REGISTRATION	8:30 - 9:00
GAME 1	9:00 - 12:00
LUNCH	12:00 - 13:00
GAME 2	13:00 - 16:00
BREAK	16:00 - 16:30
GAME 3	16:30 - 19:30

ALL PLAYERS MUST HAVE LEFT THE HALL BEFORE 20:00

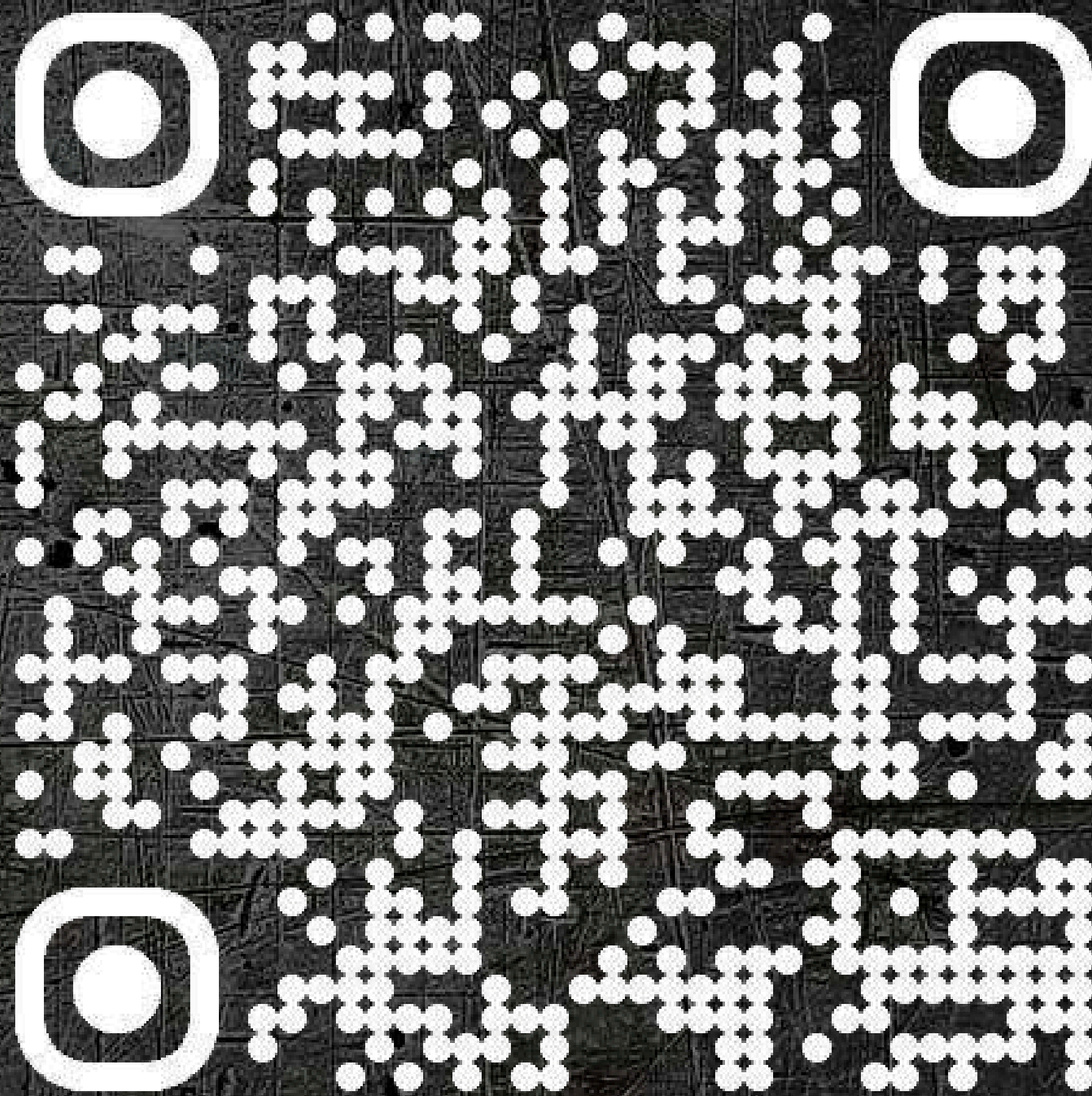
DAY 2

GAME 4	09:00 - 12:00
LUNCH	12:00 - 13:00
GAME 5	13:00 - 16:00
AWARDS	16:15
GAME 6	16:30 - 19:30

(TOP 4 ONLY)

WE WILL BE USING THE WTC FAQ WHICH CAN BE FOUND HERE:
[HTTPS://WORLDTEAMCHAMPIONSHIP.COM/WTC-RULES](https://worldteamchampionship.com/wtc-rules)

EVENT VOTING



EVERYONE IS WELCOME AT OUR TOURNAMENTS. WHETHER YOU ARE A 40K NEWBIE OR A SEASONED VETERAN, WE'RE HERE TO ENSURE EVERYONE HAS A FUN WEEKEND.

LOVE

DAN & MANI

